

# THE LAUREL

West Palm Beach

## Penthouse Collection

2104

2 Bedroom, 2.5 Bathroom

Balcony

### RESIDENT AMENITIES

38,000+ square feet of resort-style indoor/outdoor amenities

- Outdoor pool deck with plush lounges, private cabanas, hot and cold plunge pools, and treatment cabanas with massage beds
- Outdoor bar and lounge with BBQ pods
- Expansive co-working space with private conference rooms, private offices, and coffee bar
- State-of-the-art private fitness center
- Private indoor/outdoor fitness studio and pilates studio
- Golf simulator
- Game room and lounge
- Screening room with oversized TV
- Women and men's spas with steam rooms and saunas
- Private dining room with demonstration kitchen, BOH kitchen, and outdoor dining
- Children's playroom
- Dog wash room
- Bicycle storage
- Guest suites

### RESIDENCE FEATURES

- Spacious floorplans feature soaring ten-foot ceilings and floor-to-ceiling windows
- Open kitchens featuring islands with waterfall edge quartz countertops, custom Italian cabinetry with polished chrome hardware, and Carrara Marble tile backsplash
- Integrated Fisher Paykel appliance package with speed ovens
- Motorized Lutron shades in living and blackout shades in bedrooms
- Five-inch wide plank LVT flooring throughout
- Samsung stacked washer/dryers
- Salto keyless entry system
- Private balconies\*
- Luxe bathrooms feature custom Italian vanity with expansive storage, custom sconces, and quartz counter tops
- Primary bathrooms feature double sinks and glass enclosed walk-in shower with hand showers
- Resident-controlled air conditioning
- Wine cooler

### BENEFITS & SERVICES

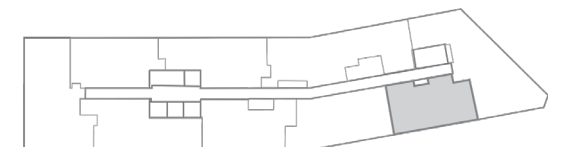
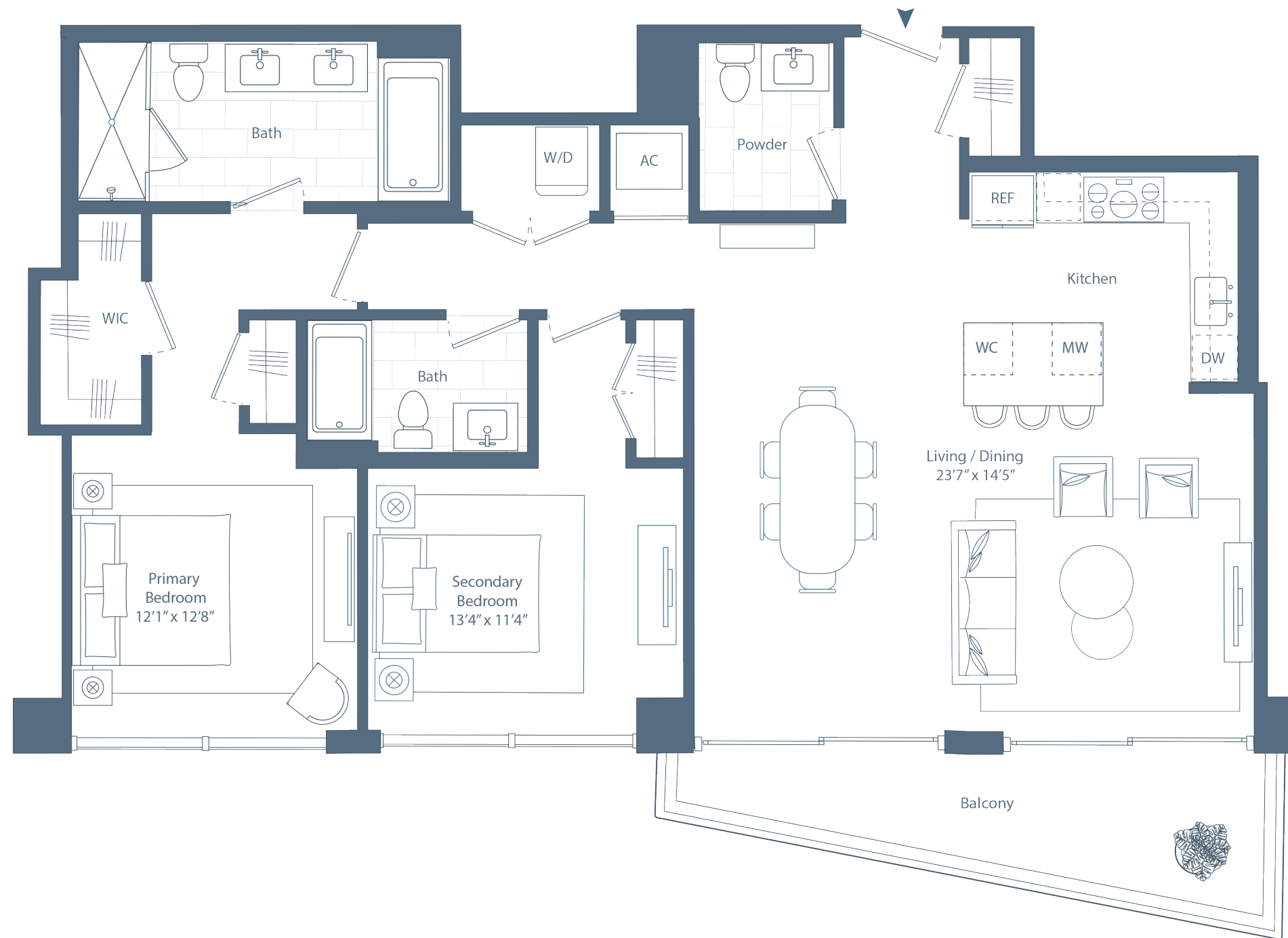
- 24-hour attended lobby
- Onsite parking with electric vehicle charging stations
- Access to Related Life exclusive benefits and programming
- Complimentary Wi-Fi in all common spaces
- Package delivery room with automated package lockers and refrigerated storage
- Smoke-free building
- Anticipated Florida Green Building Coalition Gold sustainability rating

TheLaurelWPB.com

Leasing Office: 561.491.0014

635 Hibiscus Street

West Palm Beach, FL 33401



\*Balconies on select floorplans only. This floor plan is intended for illustrative purposes only. Dimensions and square footages are approximate and variations in the layout shown may occur. Additional charges may apply to building services, benefits and amenities. Benefits and services are subject to change and are not an essential, required or ancillary service provided by the landlord. All features and specifications are subject to change. Copyright 2023 Related. Related does not discriminate against race, color, sex, religion, national origin, familial status or disability. Equal Housing Opportunity.