



### BUILDING AMENITIES

- ▶ Elegant Porte Cochère Entrance Drive
- ▶ 24-Hour Concierge-Attended Lobby Appointed in Imported Woods and Marble with Glass Loggias plus Oval Wood and Marble Elevator Vestibule
- ▶ State-of-the-Art Health and Fitness Center with Cybex, Stairmaster, Quinton and Cardio Theatre with Yoga Room\*\*
- ▶ Skylit Indoor Pool with Adjacent Sun Deck\*\*
- ▶ Lushly Landscaped Private Garden
- ▶ RelatedStyle Services™ including Personal Assistant Services, Convenient Credit Card Rent Payment, and Move-In Coordination\*\*\*
- ▶ Valet Garage Parking Onsite\*\*
- ▶ Interactive Children's Play and Party Room\*\*
- ▶ Professionally Designed Business Center with Fax, Copier, and Internet Access\*\*
- ▶ Storage Space\*\*
- ▶ Bicycle Room\*\*
- ▶ Valet Services\*\*
- ▶ Laundry Room on Every Floor
- ▶ Convenient ATM in Lobby
- ▶ Professional On-Site Leasing & Management Service Centers

### APARTMENT FEATURES

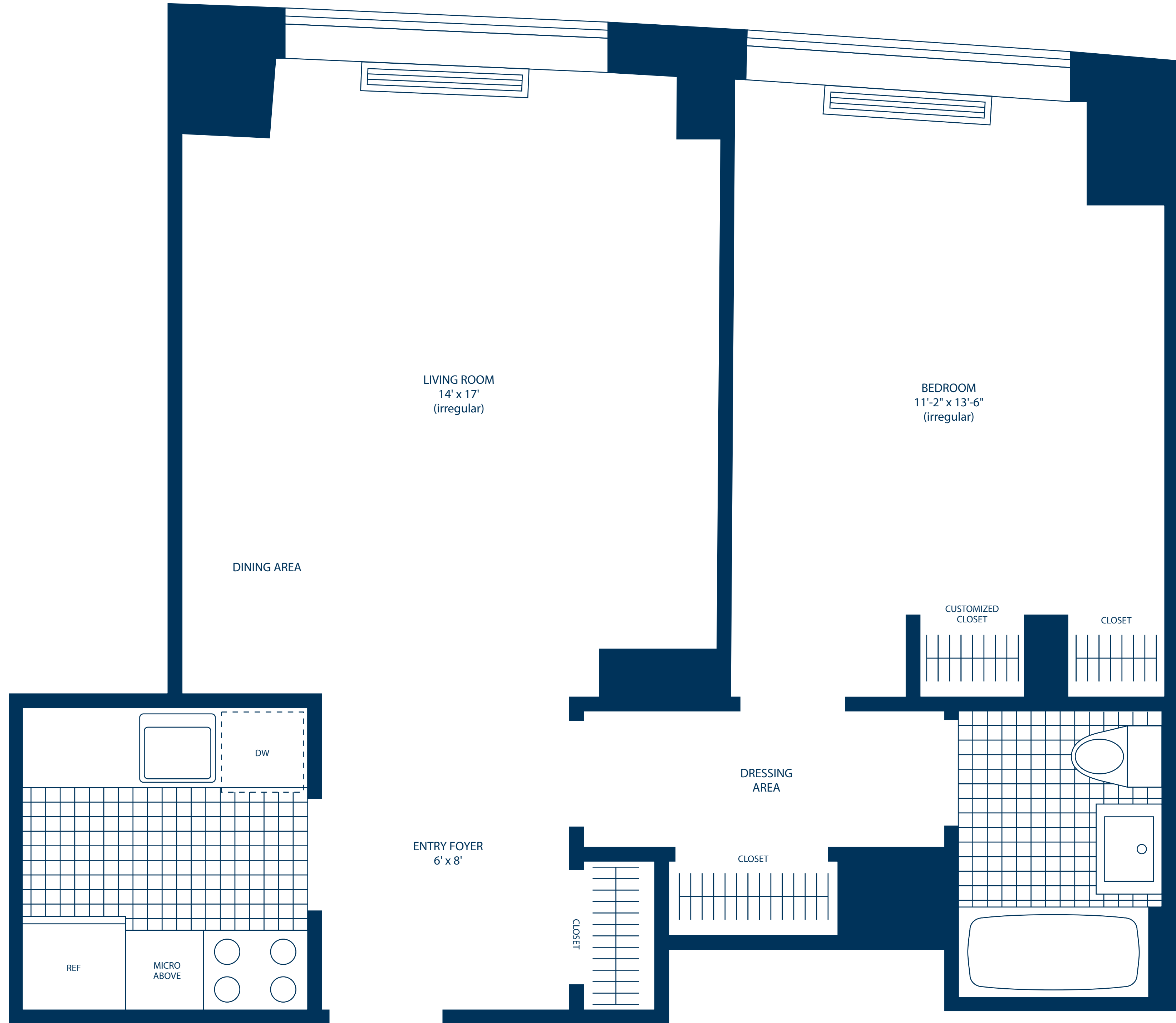
- ▶ Floor-to-Ceiling Windows\*
- ▶ Terraced Apartments\*
- ▶ Gourmet Kitchens with Granite Counters, Microwaves, Self-Cleaning Ovens, Ice Maker/Frost-Free Refrigerators, Dishwashers and Ceramic Tile Floors
- ▶ Contemporary Bathrooms with Marble Walls and Floors, Pedestal Sinks and Custom Designed Medicine Storage Cabinets with Tri-View Mirrors
- ▶ Granite Window Sills and Designer Mini-Blinds
- ▶ Windowed Kitchens\*
- ▶ Walk-In Closets\* and Customized Closets
- ▶ Oak Parquet Floors in Living Room, Dining Room, and Foyers
- ▶ Wall-to-Wall Carpeted Bedrooms
- ▶ Individual Intrusion Alarms
- ▶ Individually-Controlled Heating and Air Conditioning
- ▶ Prewiring for Multiple Phone Lines and High Speed Internet Access

\* In Select Residences \*\*Additional Charge \*\*\*Additional Charge for Some Services

### MANAGEMENT & LEASING CENTER

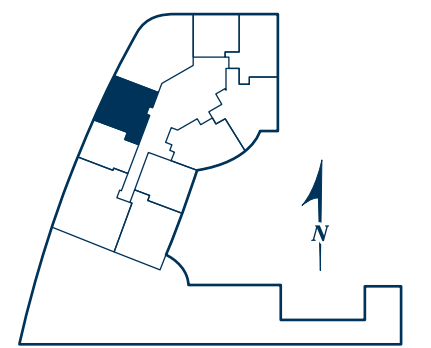
▶ (212) 945-4100 fax (212) 945-4101  
 tribecaparkleasing@related.com  
 www.tribecapark.com

EQUAL HOUSING OPPORTUNITY



# One-Bedroom Plus Dining Area

## Residence E Floors 19-PH



FLOOR \_\_\_\_\_  
 MONTHLY RENT \_\_\_\_\_  
 All Dimensions Are Approximate